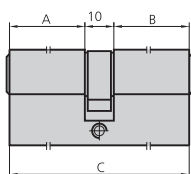

**CARACTERÍSTICAS**

- Cuerpo de latón
- Rotores de latón
- Leva larga de 15 mm
- 5 pitones
- 3 llaves

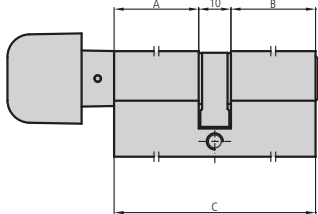
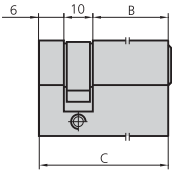
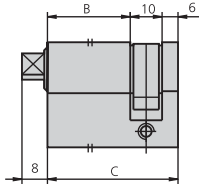
**ACCESORIOS OPCIONALES**
**DESCRIPCIÓN**
**REF.**
**MEDIDAS**
**ACABADOS**
**UDS**
**A**
**B**
**C**


- Cilindro doble

5982/2525/3	26	26	62	LP	1
5982/2525/4	26	26	62	LN	1
5982/2530/3	26	31	67	LP	1
5982/2530/4	26	31	67	LN	1
5982/2535/3	26	36	72	LP	1
5982/2535/4	26	36	72	LN	1
5982/3030/3	31	31	72	LP	1
5982/3030/4	31	31	72	LN	1
5982/2540/3	26	41	77	LP	1
5982/2540/4	26	41	77	LN	1
5982/3035/3	31	36	77	LP	1
5982/3035/4	31	36	77	LN	1
5982/2545/3	26	46	82	LP	1
5982/2545/4	26	46	82	LN	1
5982/3040/3	31	41	82	LP	1
5982/3040/4	31	41	82	LN	1
5982/3535/3	36	36	82	LP	1
5982/3535/4	36	36	82	LN	1
5982/2550/3	26	51	87	LP	1
5982/2550/4	26	51	87	LN	1
5982/3540/3	36	41	87	LP	1
5982/3540/4	36	41	87	LN	1
5982/3045/3	31	46	87	LP	1
5982/3045/4	31	46	87	LN	1
5982/2555/3	26	56	92	LP	1
5982/2555/4	26	56	92	LN	1
5982/3050/3	31	51	92	LP	1
5982/3050/4	31	51	92	LN	1
5982/3545/3	36	46	92	LP	1
5982/3545/4	36	46	92	LN	1
5982/4040/3	41	41	92	LP	1
5982/4040/4	41	41	92	LN	1
5982/2560/3	26	61	97	LP	1
5982/2560/4	26	61	97	LN	1
5982/3055/3	31	56	97	LP	1
5982/3055/4	31	56	97	LN	1
5982/2565/3	26	66	102	LP	1
5982/2565/4	26	66	102	LN	1
5982/3060/3	31	61	102	LP	1
5982/3060/4	31	61	102	LN	1
5982/3555/3	36	56	102	LP	1
5982/3555/4	36	56	102	LN	1



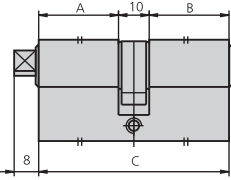
**CILINDRO EUROPERFIL NORMAL LEVA LARGA**
**SERIE 5982**

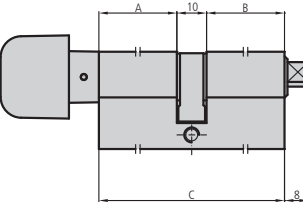
DESCRIPCIÓN	REF.	MEDIDAS			ACABADOS	UDS
		A	B	C		
	5982/4050/3	41	51	102	LP	1
	5982/4050/4	41	51	102	LN	1
	5982/4545/3	46	46	102	LP	1
	5982/4545/4	46	46	102	LN	1
	5982/4055/3	41	56	107	LP	1
	5982/4055/4	41	56	107	LN	1
	5982/2575/3	26	76	112	LP	1
	5982/2575/4	26	76	112	LN	1
	5982/3565/3	36	66	112	LP	1
	5982/3565/4	36	66	112	LN	1
	5982/4060/3	41	61	112	LP	1
	5982/4060/4	41	61	112	LN	1
	5982/4555/3	46	56	112	LP	1
	5982/4555/4	46	56	112	LN	1
	5982/5050/3	51	51	112	LP	1
	5982/5050/4	51	51	112	LN	1
	5982/2585/3	26	86	122	LP	1
	5982/2585/4	26	86	122	LN	1
	5982/3080/3	31	81	122	LP	1
	5982/3080/4	31	81	122	LN	1
	5982/3575/3	36	76	122	LP	1
	5982/3575/4	36	76	122	LN	1
	5982/4070/3	41	71	122	LP	1
	5982/4070/4	41	71	122	LN	1
	5982/5555/3	56	56	122	LP	1
	5982/5555/4	56	56	122	LN	1
	5982/2595/3	26	96	132	LP	1
	5982/2595/4	26	96	132	LN	1
	5982/4080/3	41	81	132	LP	1
	5982/4080/4	41	81	132	LN	1
	5982/6060/3	61	61	132	LP	1
	5982/6060/4	61	61	132	LN	1
	5982/3595/3	36	96	142	LP	1
	5982/3595/4	36	96	142	LN	1
	5982/6565/3	66	66	142	LP	1
	5982/6565/4	66	66	142	LN	1
	5982/7070/3	71	71	152	LP	1
	5982/7070/4	71	71	152	LN	1
	5982/7575/3	76	76	162	LP	1
	5982/7575/4	76	76	162	LN	1

DESCRIPCIÓN	REF.	MEDIDAS			ACABADOS	UDS	
		A	B	C			
 <ul style="list-style-type: none"> <li>Cilindro con pomo</li> </ul>	582PM2525/3	26	26	62	LP	1	
	582PM2525/4	26	26	62	LN	1	
	582PM2530/3	26	31	67	LP	1	
	582PM2530/4	26	31	67	LN	1	
	582PM2535/3	26	36	72	LP	1	
	582PM2535/4	26	36	72	LN	1	
	582PM3030/3	31	31	72	LP	1	
	582PM3030/4	31	31	72	LN	1	
	582PM3525/3	36	26	72	LP	1	
	582PM3525/4	36	26	72	LN	1	
	582PM2540/3	26	41	77	LP	1	
	582PM2540/4	26	41	77	LN	1	
	582PM2545/3	26	46	82	LP	1	
	582PM2545/4	26	46	82	LN	1	
	582PM3535/3	36	36	82	LP	1	
	582PM3535/4	36	36	82	LN	1	
	582PM2550/3	26	51	87	LP	1	
	582PM2550/4	26	51	87	LN	1	
	582PM3045/3	31	46	87	LP	1	
	582PM3045/4	31	46	87	LN	1	
	582PM3540/3	36	41	87	LP	1	
	582PM3540/4	36	41	87	LN	1	
	582PM2555/3	26	56	92	LP	1	
	582PM2555/4	26	56	92	LN	1	
	582PM3545/3	36	46	92	LP	1	
	582PM3545/4	36	46	92	LN	1	
	582PM2560/3	26	61	97	LP	1	
	582PM2560/4	26	61	97	LN	1	
	582PM2565/3	26	66	102	LP	1	
	582PM2565/4	26	66	102	LN	1	
 <ul style="list-style-type: none"> <li>Medio cilindro</li> </ul>	5982T40/3		26	42	LP	1	
	5982T40/4		26	42	LN	1	
	5982T45/3		31	47	LP	1	
	5982T45/4		31	47	LN	1	
	5982T50/3		36	52	LP	1	
	5982T50/4		36	52	LN	1	
	5982T55/3		41	57	LP	1	
	5982T55/4		41	57	LN	1	
	5982T60/3		46	62	LP	1	
	5982T60/4		46	62	LN	1	
	5982T65/3		51	67	LP	1	
	5982T65/4		51	67	LN	1	
	5982T70/3		56	72	LP	1	
	5982T70/4		56	72	LN	1	
 <ul style="list-style-type: none"> <li>Medio cilindro</li> <li>Triángulo por un lado</li> </ul>	5982PT2505/3		26	42	LP	1	
	5982PT2505/4		26	42	LN	1	

# CILINDRO EUROPERFIL NORMAL LEVA LARGA

# SERIE 582PM, 5982T, 5982PT

DESCRIPCIÓN	REF.	MEDIDAS			ACABADOS	UDS	
		A	B	C			
 <ul style="list-style-type: none"> <li>• Doble cilindro</li> <li>• Llave por un lado y triángulo por el otro</li> </ul>	5982PT2525/3	26	26	62	LP	1	
	5982PT2525/4	26	26	62	LN	1	
	5982PT2535/3	26	36	72	LP	1	
	5982PT2535/4	26	36	72	LN	1	
	5982PT2545/3	26	46	82	LP	1	
	5982PT2545/4	26	46	82	LN	1	

 <ul style="list-style-type: none"> <li>• Doble cilindro</li> <li>• Triángulo por un lado y pomo por el otro</li> </ul>	582PM25T25/3	26	26	62	LP	1	
	582PM25T25/4	26	26	62	LN	1	
	582PM30T30/3	31	31	72	LP	1	
	582PM30T30/4	31	31	72	LN	1	
	582PM35T25/3	36	26	72	LP	1	
	582PM35T25/4	36	26	72	LN	1	
	582PM35T35/3	36	36	82	LP	1	
	582PM35T35/4	36	36	82	LN	1	
	582PM30T45/3	31	46	87	LP	1	
	582PM30T45/4	31	46	87	LN	1	